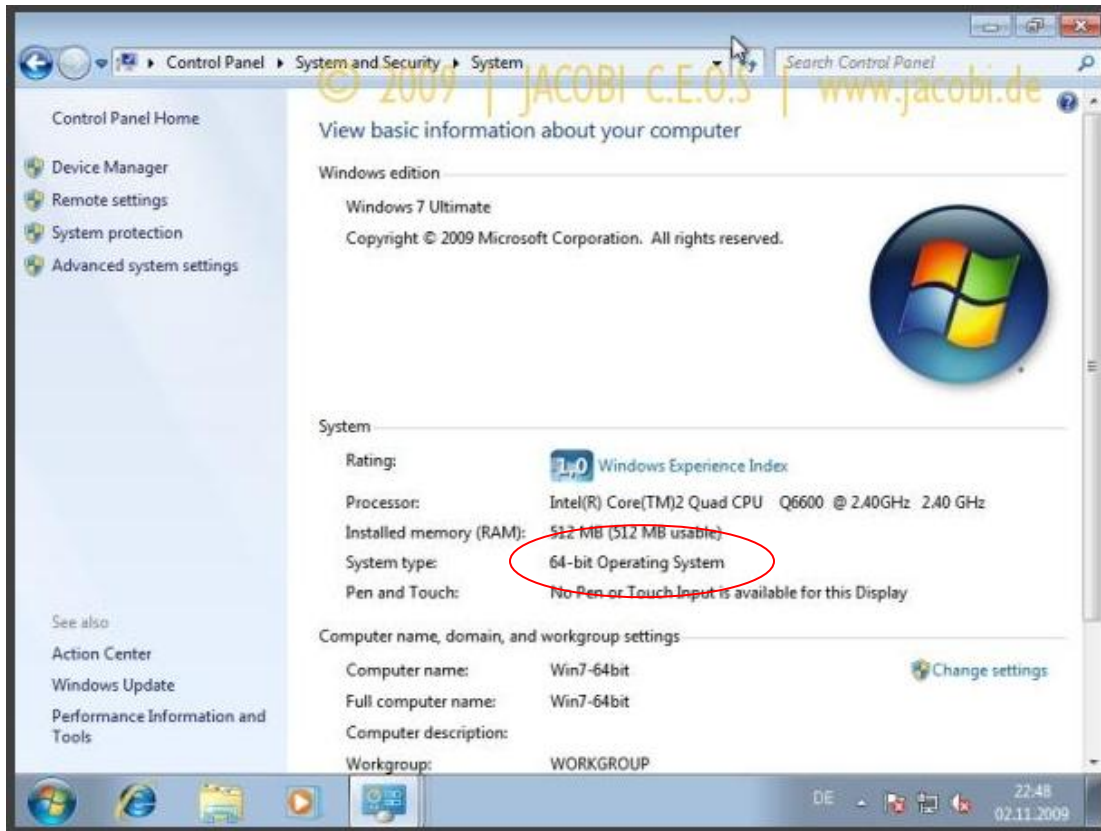


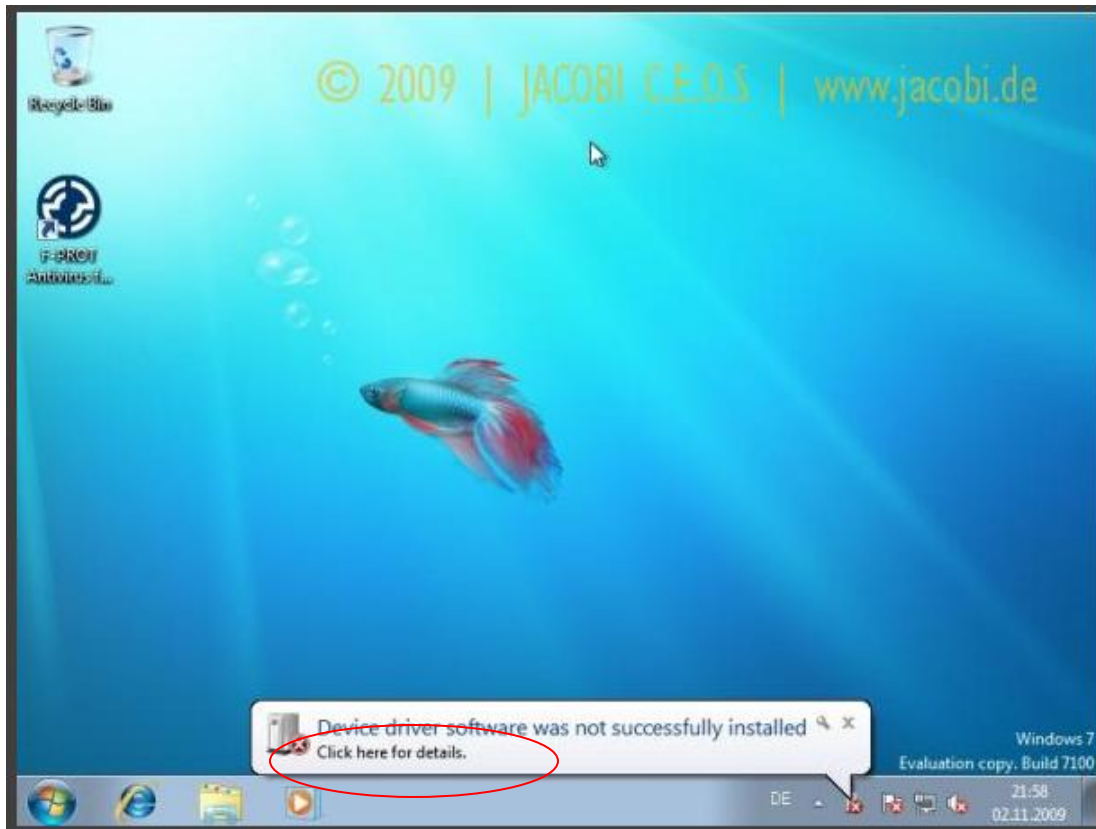
(1) Check Device Manager and make sure OS is **Windows 7 (64-bit)** instead of Win7 32-bit OS.

If it is Win7 32-bit OS, then it has already built in native SigmaTel driver for ACT-IR2000UL/IR4000US. Hence, no need to install any external driver. Just plug and play. Windows will automatically find the driver for you.

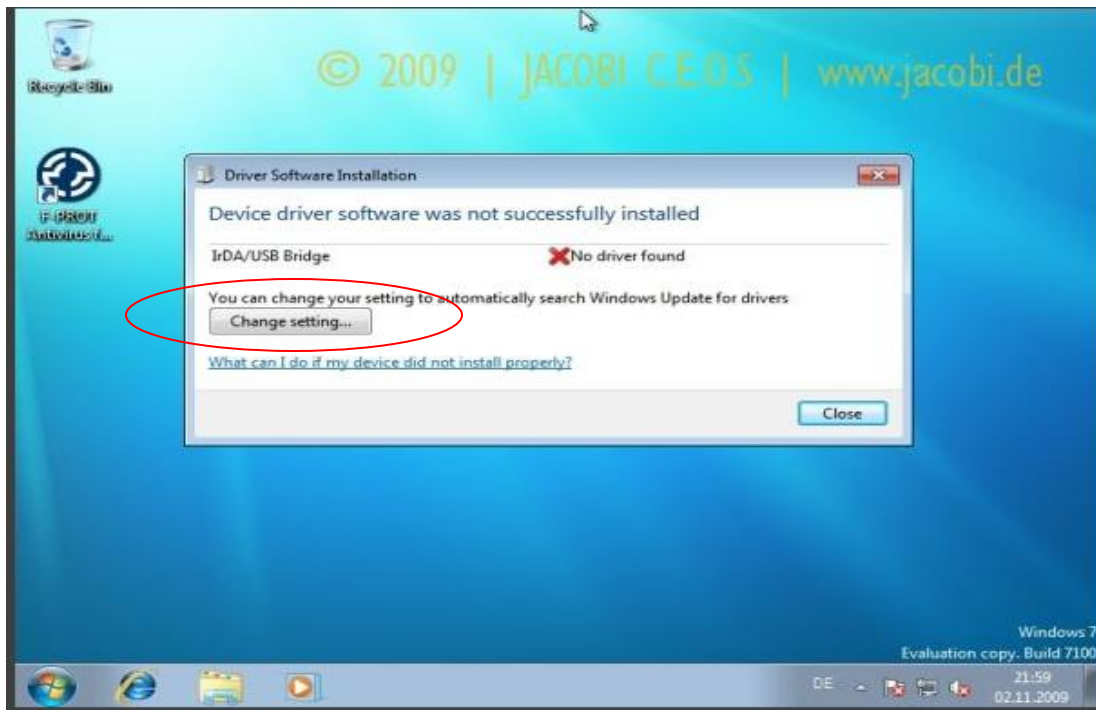
This procedure is applied for Win7 64-bit OS for IR2000UL/IR4000US only.



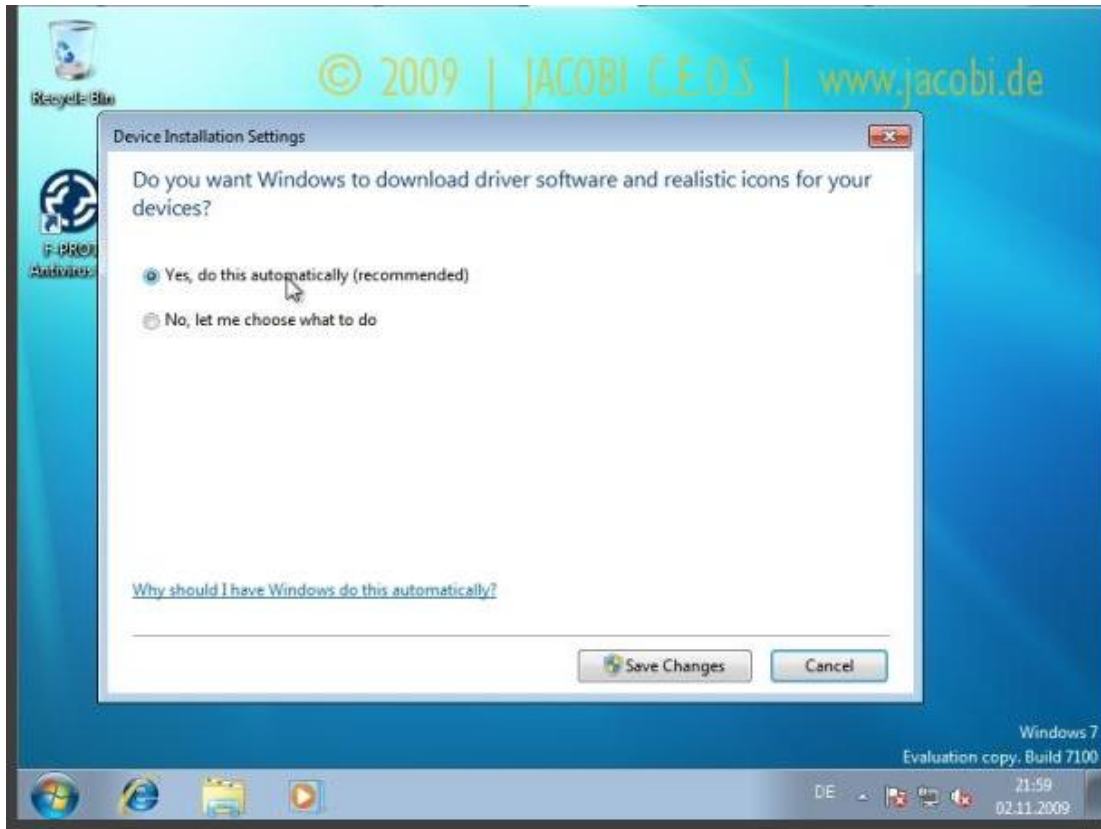
(2) Now, Remove all drivers, which you tried previously for ACT-IR2000UL/IR4000US (if any). Plug the device and let windows to find driver first from its internal driver database. Eventually, Windows could not find driver by itself and come up with following shown message.



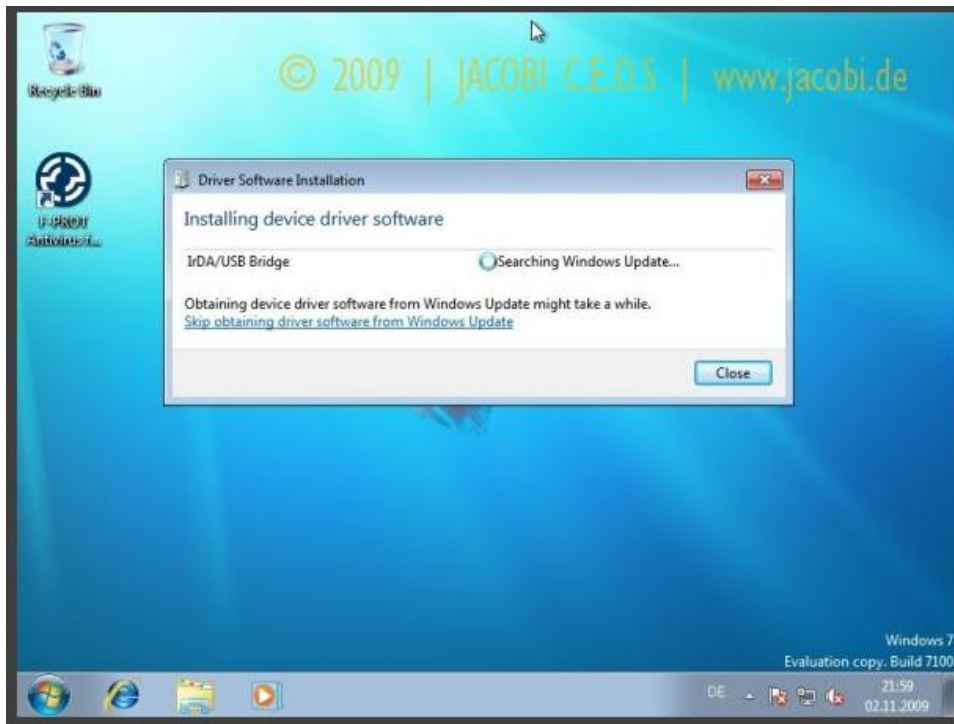
(3) Now, Click on hyperlinked **“Click here for details”** message shown in above screenshot, which will pop up new windows as shown below.



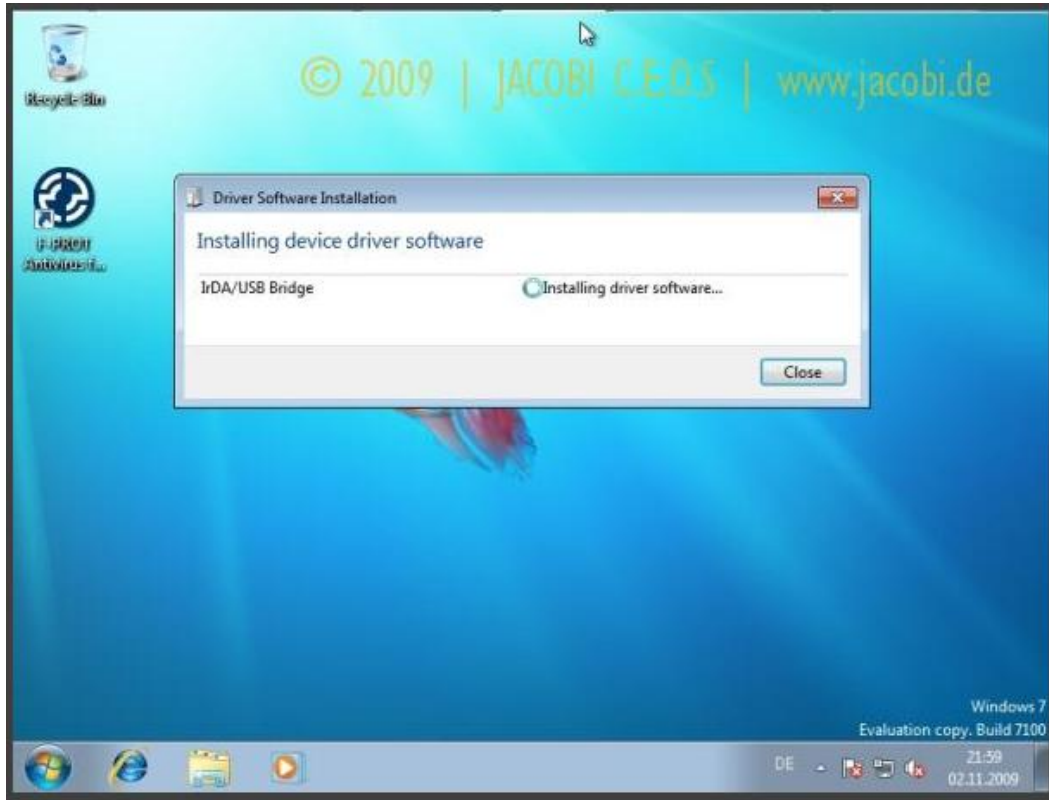
(4) Press button **“Change settings”** which will open following windows to chose online update another compatible driver.



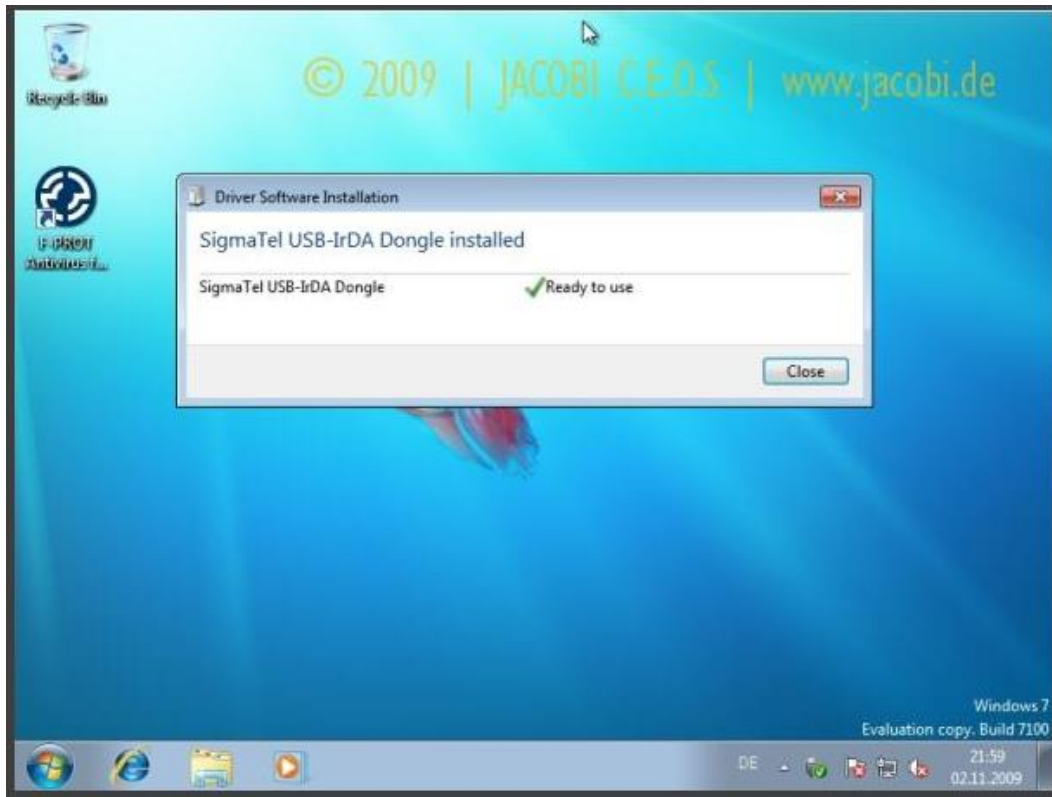
(5) Choose first option **“Yes, do this automatically (recommended)”** and press **“Save Changes”** button in above screen. This will let windows to search online windows update to find compatible driver as shown in below screen.



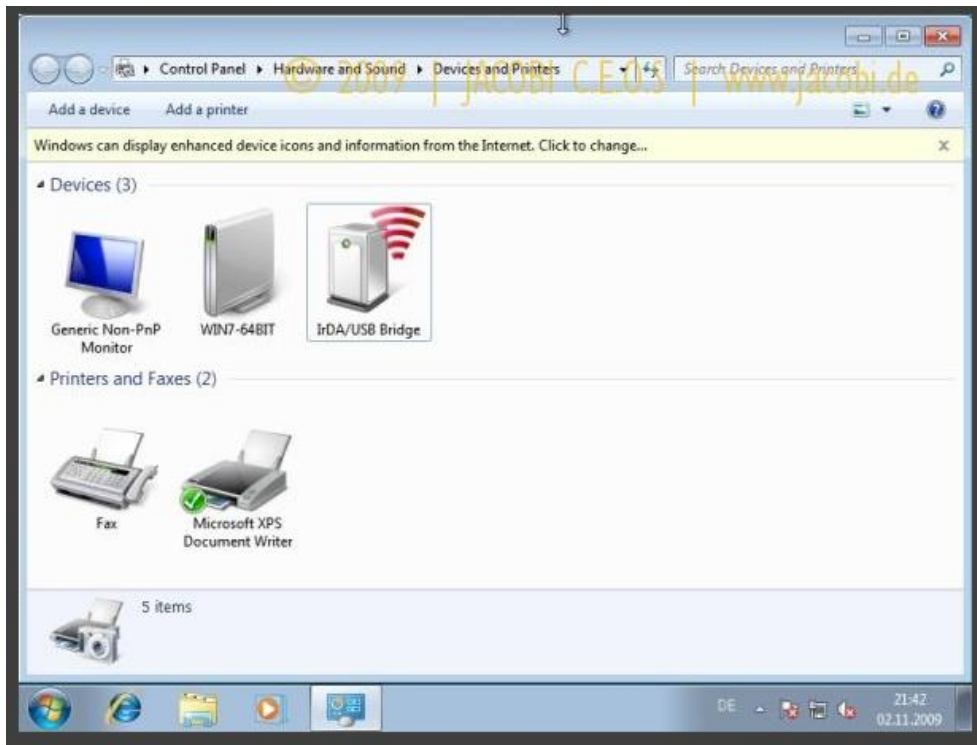
(6) Windows should find compatible driver and start installing driver as shown below screen.



(7) If driver installation is successful it will show **“Sigmatel USB-IrDA Dongle”** and **“Ready to use”** as shown below screen. This means your driver installation is done.



(8) You can make sure and change driver properties as needed from Control Panel> Hardware and Sound> Devices and Properties as shown below screen.



(9) If you face another IrDA complaint device (For example, Nokia 6021) within 1 meter line of sight with IR4000US/IR2000UL, you will get pop up message under system tray as **“Another Computer is nearby”** as shown in below screen.

